

İNŞAAT MÜHENDİSLİĞİ SEKTÖRÜ TİCARET LİMİTED ŞİRKETİ

CONSTRUCTION ENGINEERING INDUSTRY TRADE LIMITED COMPANY

☎ 0216 491 44 82 www.gurtes.com.tr

BOARD OF DIRECTORS / YÖNETİM KURULU



Murat KARAOĞLU
Teknik Direktör / Technical Director
Elektirik Mühendisi / Electrical Engineer
murat.karaoglu@gurtes.com.tr



Hasan GÜREK
Finans Direktör / Finance Director
Mekanik Mühendisi / Mechanical Engineer
hasan.gurek@gurtes.com.tr



Hikmet AYAZOĞLU
Fabrika Müdürü / Factory Manager
Mekanik Mühendisi / Mechanical Engineer
hikmet.ayazoglu@gurtes.com.tr



Abulmutalip İPEK
Proje Müdürü / Project Manager
İnşaat Mühendisi / Construction Engineer
abulmutalip.ipek@gurtes.com.tr



Yusuf SANLI
Ekip Arkadaşı / Team Friends
Çelik Mühendisi / Steel Engineer
yusuf.sanli@gurtes.com.tr



Yener HABERAL
Proje Direktör / Project Director
Teknik Mühendisi / Technical Engineer
yener@gurtes.com.tr

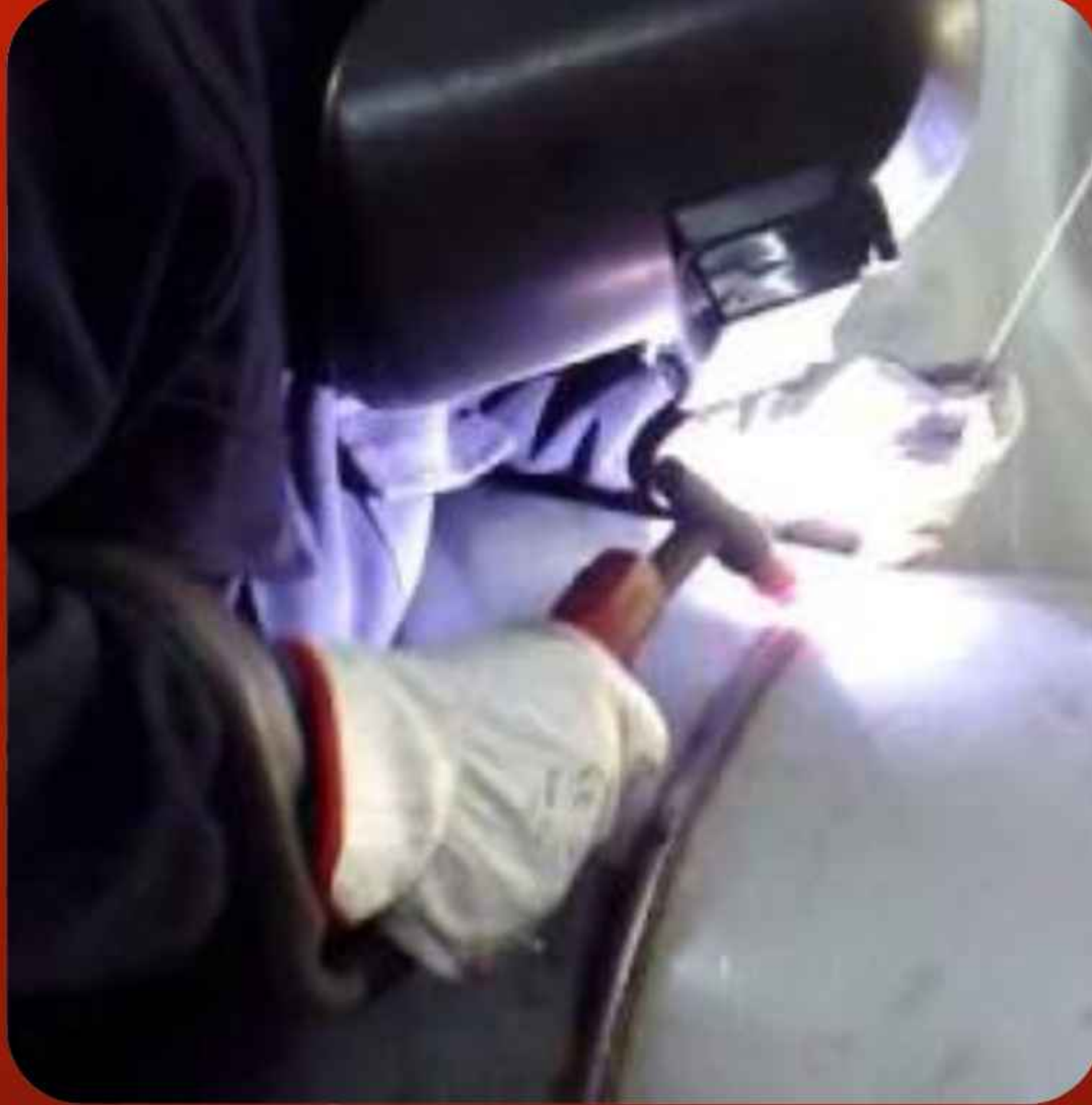


Asım HIDIR
Proje Direktör / Project Director
Teknik Mühendisi / Technical Engineer
asim.hidir@gurtes.com.tr

GÜRTEŞ, inşaat sektöründeki yapısal mimari ve uygulamalar üzerine teknolojik çalışmalar yürüten bir firmadır. Ayrıca, yerli ve yabancı firmalarla iş ortaklıkları yaparak şirketlerini pazarlarda temsil eder ve müşterilere özel çözümler sunar. Ar-Ge ve sektörle ilgili teknolojik yatırımlar yaparak müşterilere değer katmaya odaklanan GÜRTEŞ, projelerde müşteri memnuniyetini ve sürekliliğini sağlamak için organizasyonel yapıyı en üst düzeyde bilgi, araştırma ve deneyimle birleştirir. Ticari, teknik ve mühendislik alanlarında faaliyet gösteren firma, proje yöneticisi veya konsorsiyum lideri olarak ithalat, ihracat ve taahhüt işlerini üstlenir ve tüm proje sorumluluğunu eğitimli personeliyle birlikte yürütür.

GÜRTEŞ is a company that conducts technological research and development in the construction sector, focusing on structural architecture and applications. The company also forms partnerships with specialized local and international firms, representing them in both domestic and foreign markets. By investing in R&D and technological advancements relevant to the industry, GÜRTEŞ takes pride in offering its clients exclusive and value-added solutions. As a solution-oriented entity, GÜRTEŞ operates with an organized structure aimed at achieving customer satisfaction and continuity in projects, solutions, and applications through the integration of top-level knowledge, research, and experience among all its employees. Acting as a commercial, technical, and engineering firm, GÜRTEŞ assumes the role of project manager or consortium leader in projects requiring collaboration, handling import, export, and contracting tasks. In such cases, the company takes full project responsibility, managing all logistical and engineering activities with its trained technical and administrative staff.

STEEL CONSTRUCTION DESING / ÇELİK KONSTRÜKSİYON TASARIMI



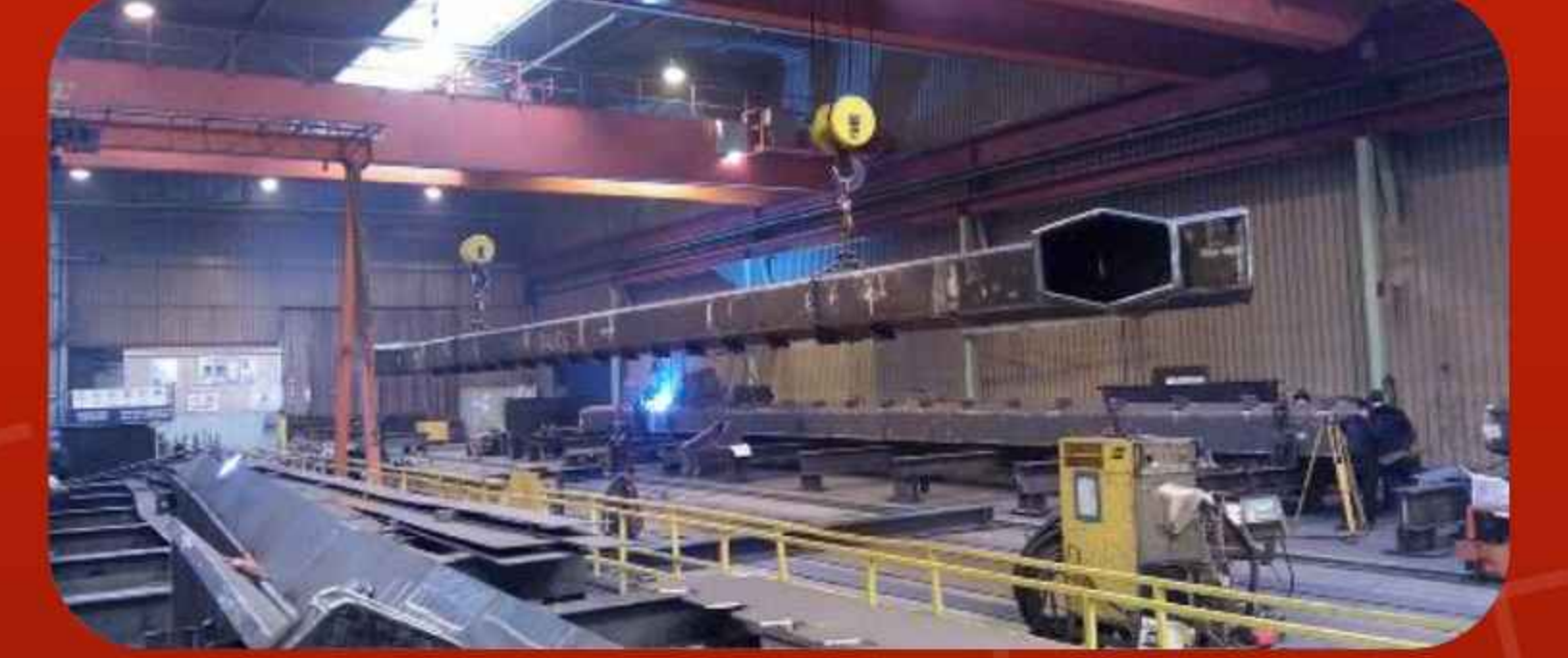
We have 5000 M2 closed steel processing center. There are all kinds of welding systems in our facility.



We never compromise on quality with our certified welding operators. All our welded products are manufactured in accordance with the standards.



Our factory has steel cutting machines for cutting twisting machines, plasma cutting machines as well as laser cutting machines for precision cutting. With our furnace paint systems, we have hot dip galvanizing line for metal surface coating. We have roll form machines for the production of C profile for exterior cladding systems.



Project planning and static plans are prepared according to the wishes of our customers by our expert engineers. All manufacturing work orders are removed by this team and all processes are followed in accordance with our quality standards. Our assembly team performs a practical installation without a second application in the field.

PRODUCTION ACCORDING TO CUSTOMER DEMAND
MÜŞTERİ TALEBİNE GÖRE ÜRETİM



In line with the demands and demands of our customers, there are many jobs that we customize in steel, stainless and aluminum materials. Customer satisfaction is important to us in all our work without compromising on quality. The success we achieved in our light steel applications, especially in structural architecture, has been presented to the appreciation of our valued customers. In our light steel applications, agricultural special greenhouses are in different business lines that we produce.

Müşterilerimizin talep ve talepleri doğrultusunda çelik, paslanmaz ve alüminyum malzemelerde özelleştirdiğimiz birçok iş var. Tüm çalışmalarımızda kaliteden ödün vermeden müşteri memnuniyeti bizim için önemlidir. Hafif çelik uygulamalarımızda, özellikle yapısal mimaride elde ettiğimiz başarı, siz değerli müşterilerimizin beğenisine sunulmuştur. Hafif çelik uygulamalarımızda tarımsal özelselara da üretimini gerçekleştirdiğimiz farklı iş kolları içerisinde yer almaktadır.

ARCHITECTURAL DESIGN / MİMARİ TASARIM

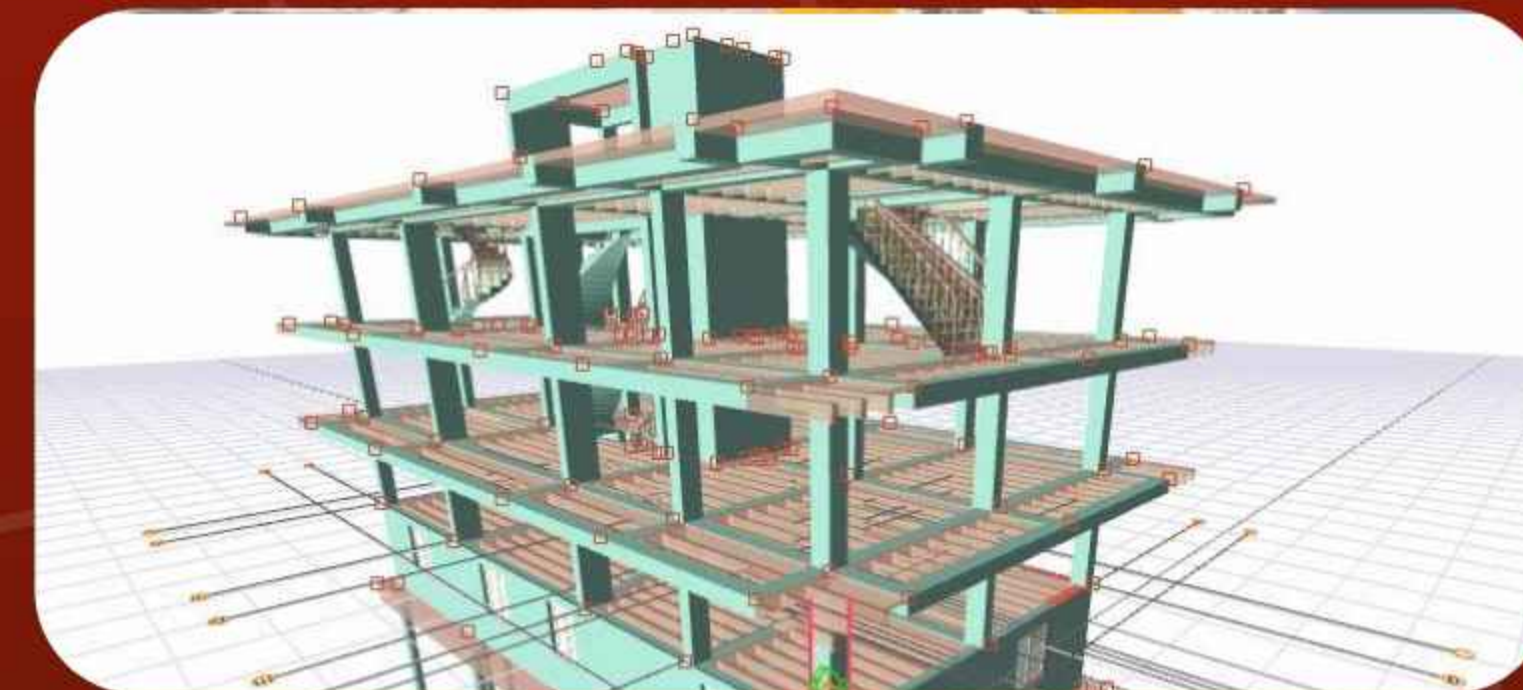
Our company operates as a solution partner in practical and applied fields such as architecture, design, project management, engineering and consultancy. With our young and dynamic design team and experienced management team, we are bringing our innovative ideas to our customers with our strong technical infrastructure and broad industry experience.

Project management our architectural project design and project management team carries out projects in various scales at home and abroad for the leading companies in the field and individuals who have success and rigor at the core of their business.

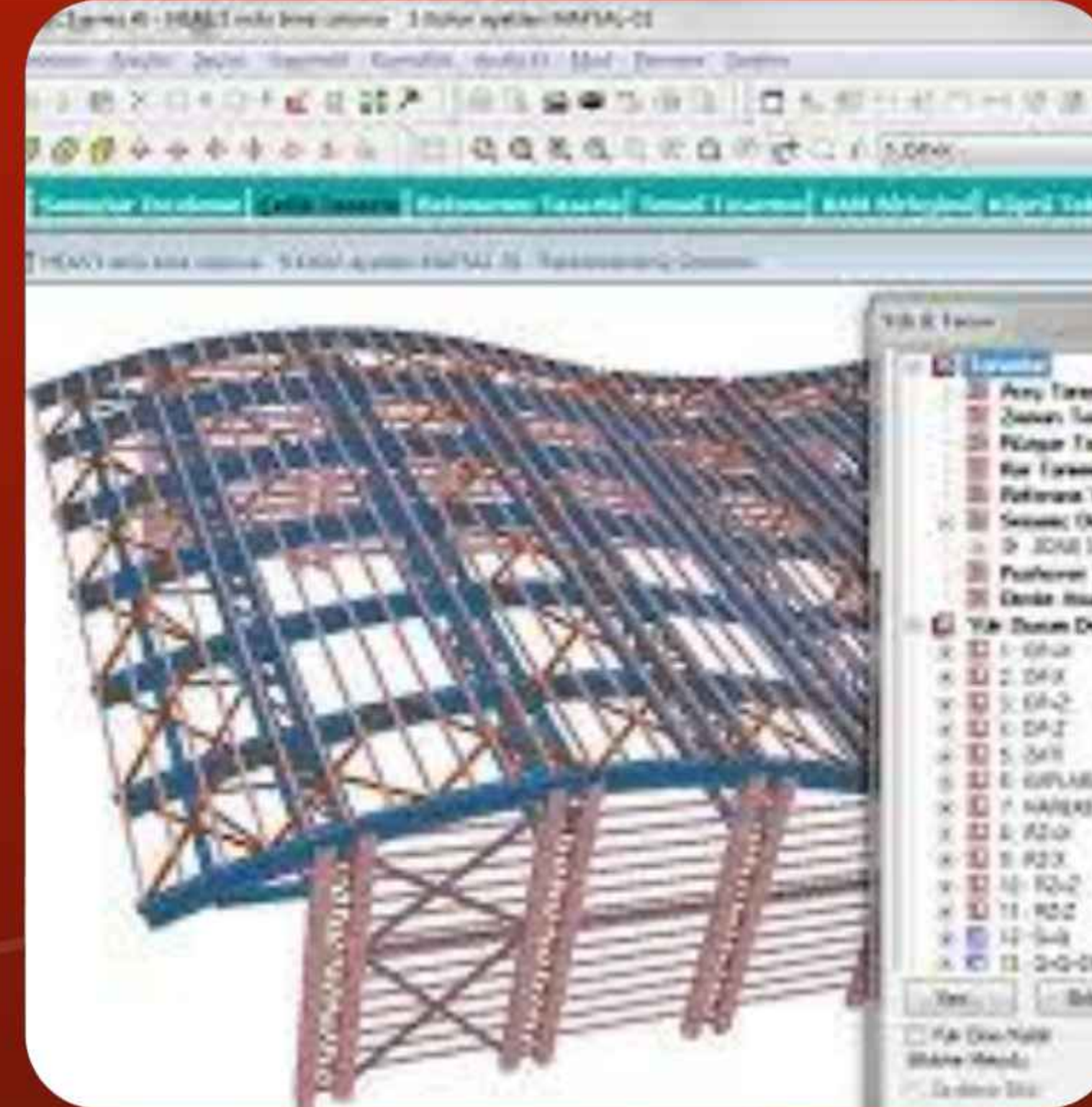
Residential, mixed-use building, commercial buildings, industrial building projects, hotel projects, office projects, restaurant projects, cafe projects have developed design and project processes based on technical accuracy and iconic foundations by considering customer needs and tastes.

Firmamız mimari, tasarım, proje yönetimi, mühendislik ve danışmanlık gibi pratik ve uygulamalı alanlarda çözüm ortağı olarak faaliyet gösteriyoruz. İşverenlerimize genç ve dinamik tasarım ekibimiz ve deneyimli yönetim kadromuzla Güçlü teknik altyapımız ve geniş sektör deneyimimiz ile özelleştirilmiş çözümleri müşterilerimize sunarak inovatif fikirlerimizi hayata geçiriyoruz.

Proje Yönetimi Mimari proje tasarım ve Proje yönetimi ekibimiz, alanında öncü firmalar ve işinin temelinde başarı ve titizlik olan bireyler için yurt içi ve yurt dışında çeşitli ölçeklerde projeler yapar. Konut, karma kullanımlı bina, ticari yapılar, endüstriyel yapı proje, otel projeleri, ofis projeleri, restoran projeleri, kafe projelerini tasarım temelinde müşteri ihtiyaç ve zevklerini gözleterek teknik doğruluk ve ikonik temeller esas alınarak tasarım ve proje süreçleri geliştirmiş ve projelerini üretmiştir.



CONSTRUCTION STATIC PROJECTING / İNŞAAT STATİK PROJELERİNDİRME



One of the two basic projects that make up a building is an architectural project and the other is a static project. In the architectural project, the target is to plan the building according to user requests and needs. The goal of the static project is the realization of the architectural project.

The architect projects in detail the spaces to meet the needs of the building to be built, their relations with each other, their proportions and their external appearance. It draws floor plans separately for each floor of the building. Expresses the floor plans from the top of the floor in the direction it is facing down. In the floorplan, stairs, walls, doors, windows, covering types are detailed with their dimensions. Columns, beams, floors for the carrier system are not shown in the architectural project. (Structural system is designed by a civil engineer with a static project as we will mention below.)

Bir yapıyı oluşturan iki temel projeden birisi mimari proje diğeri statik projedir. Mimari projede hedef yapının kullanıcı istek ve ihtiyaçlarına göre planlanmasıdır. Statik projede hedef mimari projenin hayata geçirilmesidir. Mimar, inşa edilecek yapının ihtiyaç talebini karşılayacak mekânları, birbirleri ile olan ilişkilerini, oranlarını ve diğer görünüşlerini ayrıntılı bir şekilde projelendirir. Yapının farklı her katı için ayrı ayrı kat planlarını çizer. Kat planlarını döşeme üstünden keserek aşağı baktığı yönde ifade eder. Kat planında merdivenler, duvarlar, kapılar, pencereler, kaplama türleri ölçüleri ile birlikte detaylandırılır.

Mimari projede taşıyıcı sisteme yönelik kolonlar, kirişler, döşemeler gösterilmez. (Taşıyıcı sistem aşağıda değineceğimiz şekilde inşaat mühendisleri tarafından statik proje ile projelendirilir.) Firmamız tüm projelerinde konusunda uzman mühendis ekibimiz ile statik projelerimizi hazırlamaktayız.

INDUSTRIAL STRUCTURES / SANAYİ YAPILARI



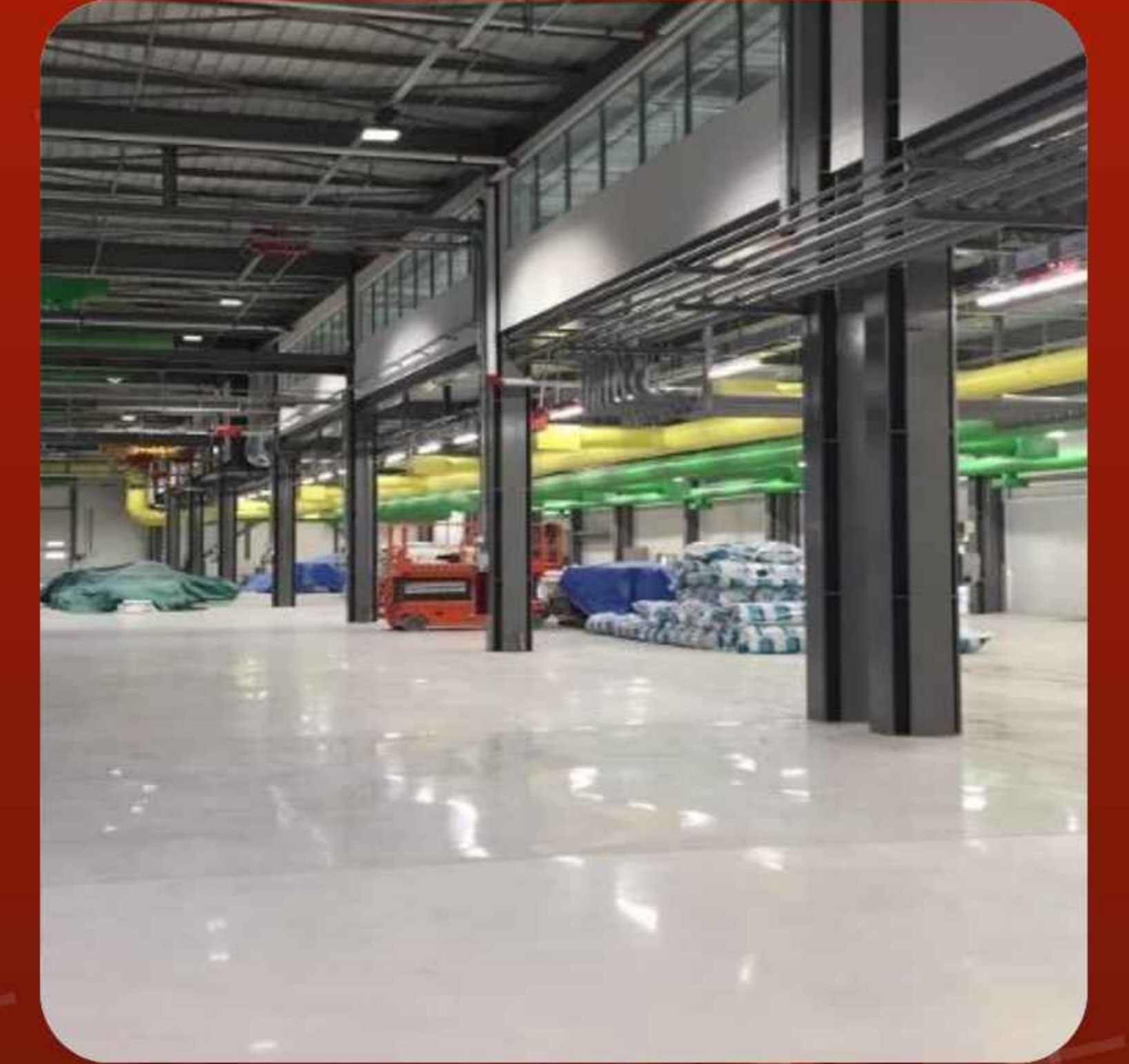
Kale Aero

Factory Construction: GÜRTES has completed and delivered architectural, mechanical, static, steel fabrication, electrical projects and mechanical projects in this project.

Our project delivery date is March 2019.

Project completion amount is \$ 17.000.000.00

Adress: KALE HAVACILIK SAN. TİC. A.Ş Tuzla Serbest Bölge./ İSTANBUL

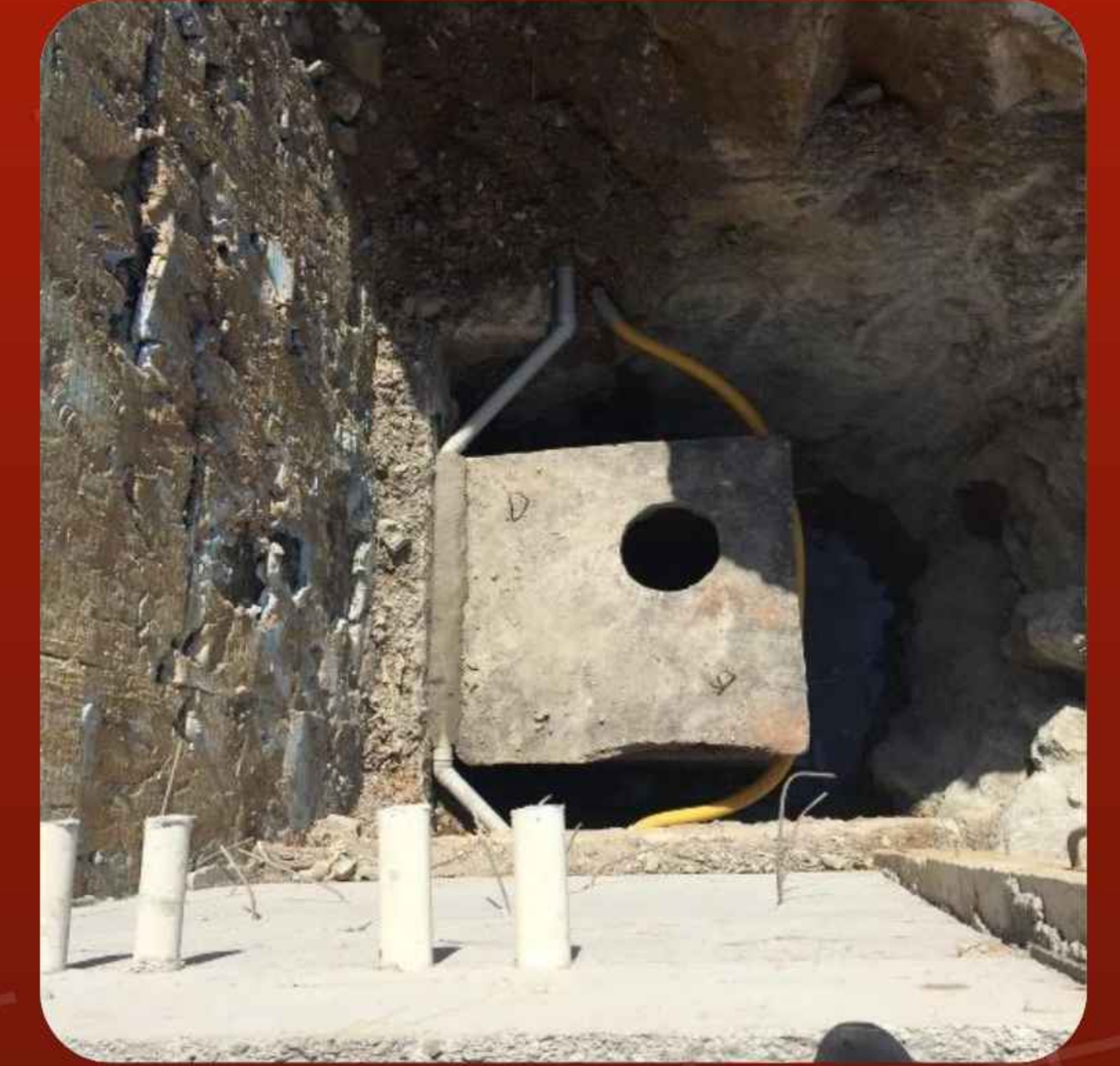
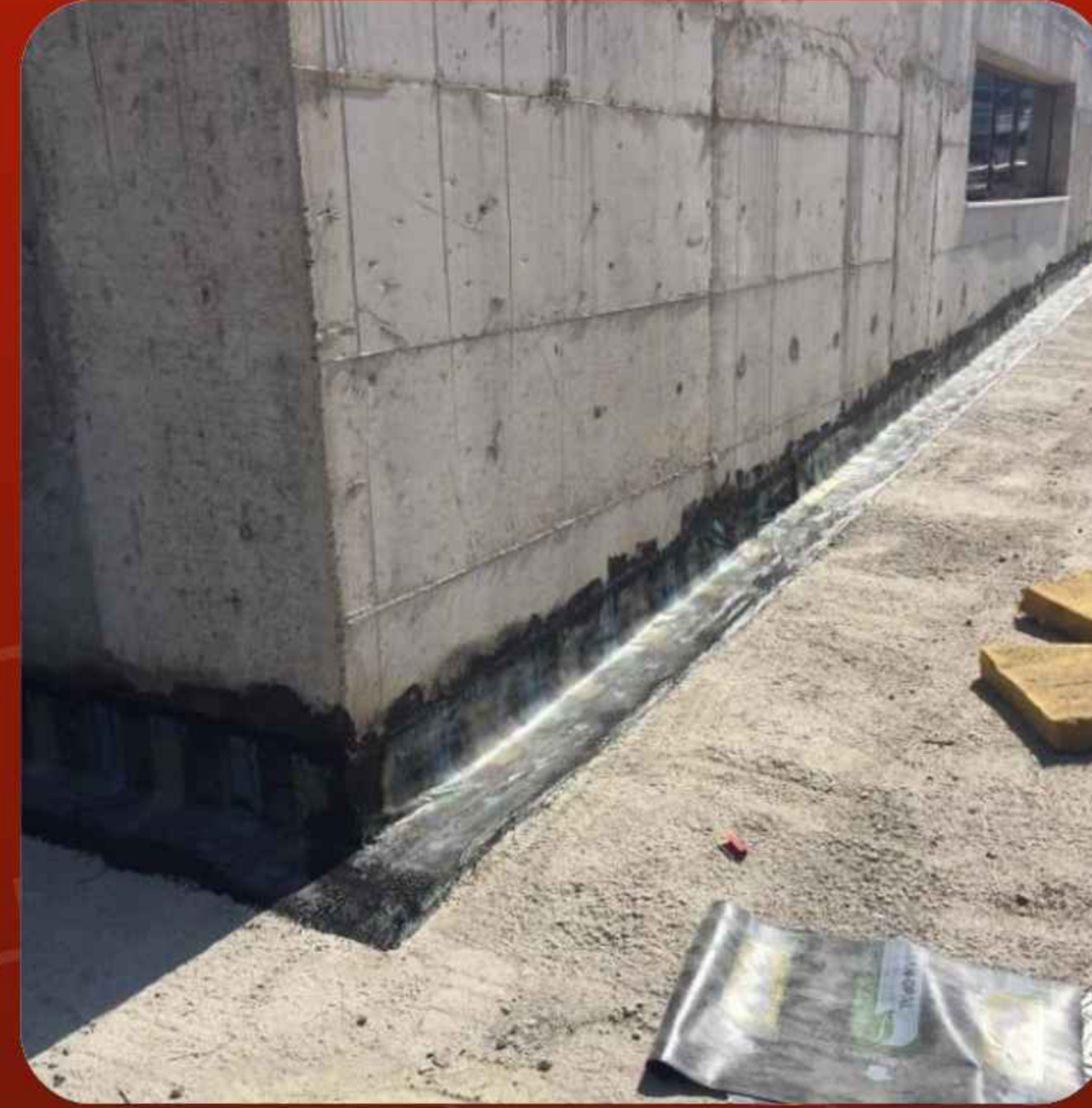


INDUSTRIAL STRUCTURES / SANAYİ YAPILARI



We have produced special solutions for light steel, high ceiling and wide area requirements. We have shaped the needs of our customers with our low quality applications with high usable costs in line with the demands of our customers

INDUSTRIAL STRUCTURES / SANAYİ YAPILARI



REINFORCED CONCRETE BUILDINGS / ARMATÜRLÜ BETON YAPILAR



Ovacik villa project, total twenty-one villa construction. GÜRTES has carried out the construction works for all structures, heating, cooling, electrical and mechanical works. In this project, Gürtes prepared and implemented architectural projects and static projects.

REINFORCED CONCRETE BUILDINGS / ARMATÜRLÜ BETON YAPILAR



Kerpe Villas and twelve villa projects. GÜRTES designed and implemented architectural, static, mechanical and electrical projects in this project. The project was delivered and delivered in a short period of time as a whole.

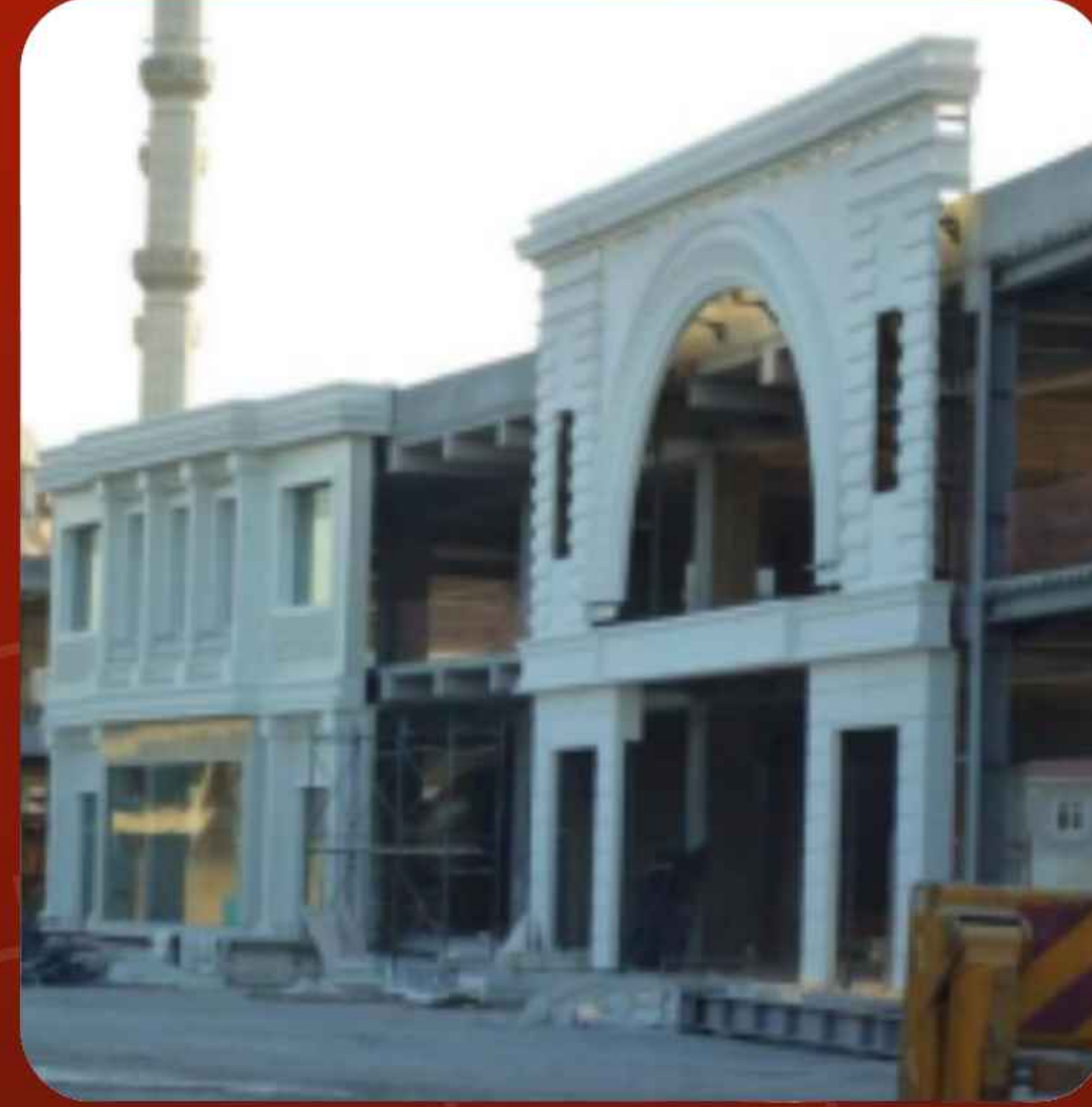
LIGHT STEEL / HAFİF ÇELİK



LIGHT STEEL TOKİ HOME / HAFİF ÇELİK TOKİ EVİ



REINFORCED CONCRETE BUILDINGS / ARMATÜRLÜ BETON YAPILAR



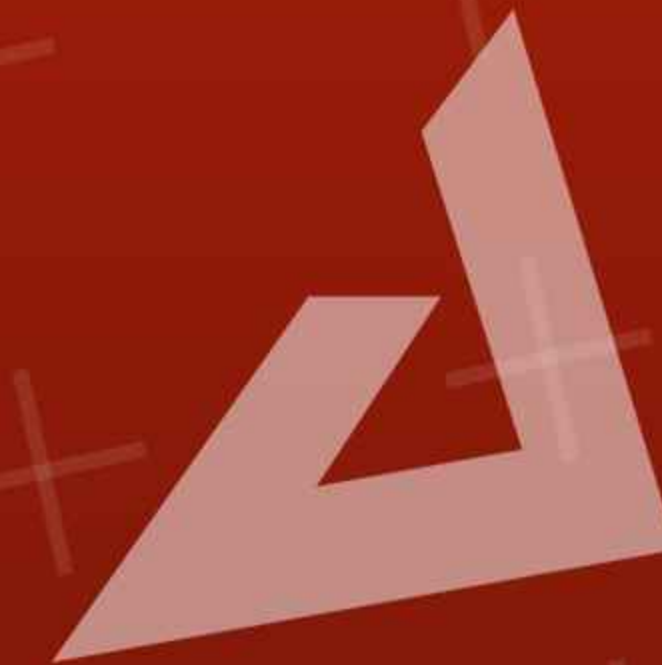
Some of our projects managed under the leadership of our project manager Abdulmutalip İpek.

PREFABRICATED PRODUCTION PLANT / PREFABRİK ÜRETİM TESİSİ



Our factory is located in Düzce Akçakoca. Our total closed area is 10000 m2 and our production capacity is 20000 m3 per month. Our company produces Reinforced Concrete Prefabricated Building Elements. Apart from this activity, it produces Bridge beams and bearing systems.

Fabrikamız Düzce Akçakoca mevkiinde dir. Toplam Kapalı Alanımız 10000 M2 olup Üretim Kapasitemiz Aylık 20000 M3 dür. Firmamız Betonarme Prefabrik Yapı Elemanları üretimi yapar. Bu faaliyetin dışında Köprü kiriş ve taşıyıcı sistemler üretmektedir.



GÜRTEŞ

www.gurtes.com.tr

PREFABRICATED FACTORY BUILDINGS / PREFABRİK FABRİKA BİNALAR



Uşaklıgil Makine İhtisas
OSB 16000M2



Ağır Haddecilik A.Ş Makine İhtisas
OSB 15000M2



Bilge İnoks A.Ş Makine İhtisas
OSB 25000M2



Sönmez Trafo A.Ş Makine İhtisas
OSB 15000M2

ÜRGÜP STUDENT DORMITORY / ÜRGÜP ÖĞRENCİ YURDU



Ürgüp Öğrenci Yurdu'nun hafif çelik projesi, modern ve dayanıklı bir yapıya sahip olacak şekilde tasarlanmıştır. Hafif çelik, yapıya güç ve esneklik sağlar ve aynı zamanda hızlı bir inşaat süreciyle sonuçlanır. Yapı, öğrencilerin konforunu ve güvenliğini ön planda tutacak şekilde planlanmıştır.

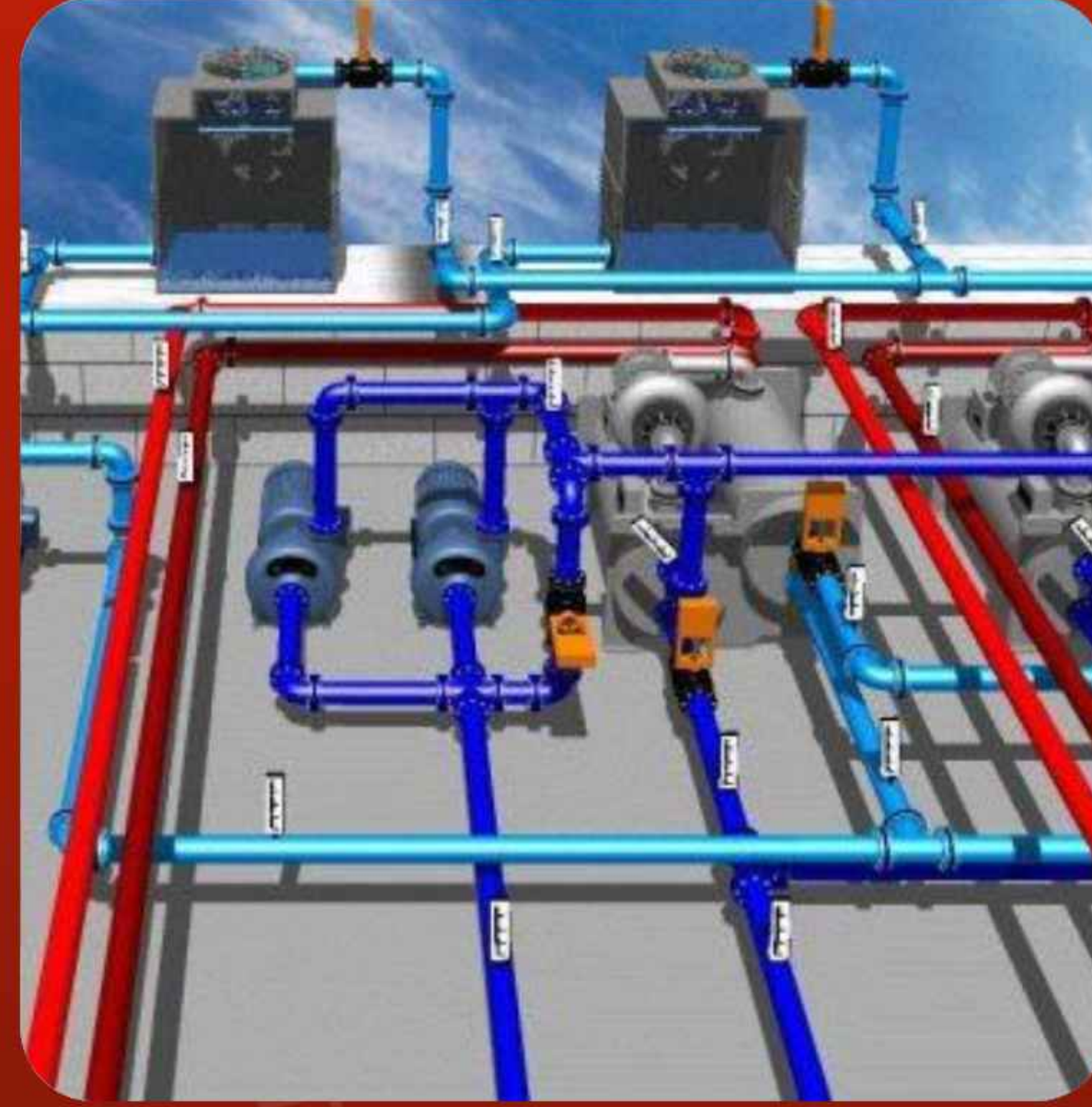
Binanın dış cephesi, çevreye uyumlu bir tasarıma sahip olacak şekilde düşünülmüştür. İç mekan tasarımı, öğrencilerin ihtiyaçlarını karşılayacak şekilde optimize edilmiştir. Her bir odada çalışma masası, yatak ve depolama alanı gibi temel eşyalar bulunacaktır.

MECHANICAL PLUMBING SYSTEMS / MEKANİK TESİSAT SİSTEMLERİ



MMK Metalurji A.Ş Dilovası/Kocaeli Neutralization waste water filtration system. The work done: 1. Stainless steel tank manufacturing. 2. Manufacture and installation of stainless steel pipes. 3. HDPE Pipe Assemblies. 4. All infrastructure works and trenching Works. 5. Isolation of the entire system by rubber insulation. 6. Operate the system by integrating the machines with OSB.

MECHANICAL PLUMBING SYSTEMS / MEKANİK TESİSAT SİSTEMLERİ



DD DemirDöküm

E.C.A.



MANNESMANN

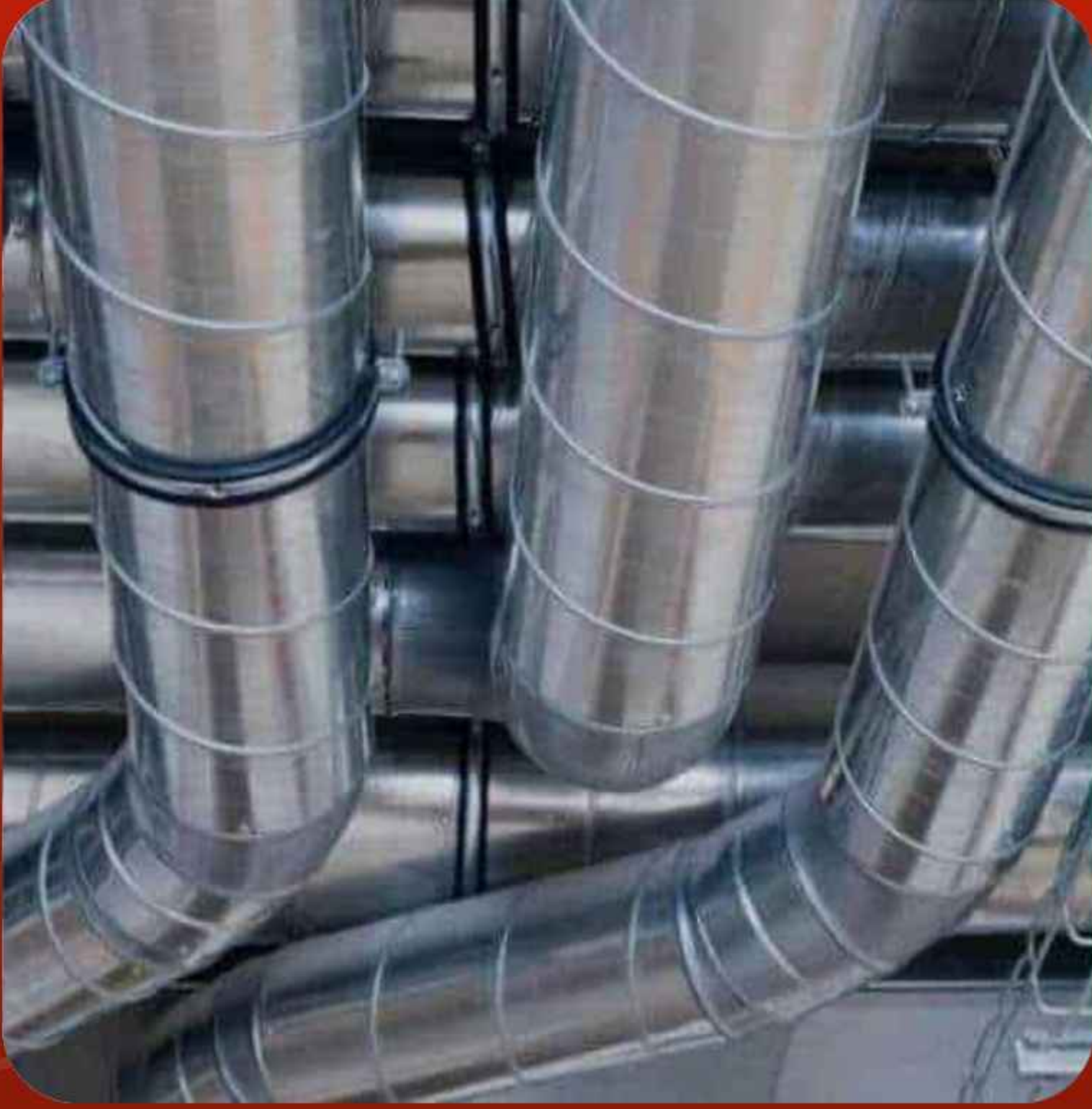
newtherm

ETNA

Hidrofor & Pompa Teknolojileri

. Indoor water supply systems. installation of heating pipe systems*. installation of cooling pipe systems*. Waste water pipe systems*. Design and application of heatingboiler room*. Design and application of watertreatment systems*. Fire detection and extinguishingsystems design and application*. Application of heating and coolingautomation systems*. Renewable energy supply systems*. Design and application of hot oilsystems*. Natural Gas Systems design and application

VENTILATION AND AIR CONDITIONING / HAVALANDIRMA VE İKLİMLENDİRME



 **arçelik**

 **DAIKIN**

TOSHIBA

 **MITSUBISHI**

. Manufacturing and installation of ventilation ducts.. Air conditioning systems design and application.*. Fire systems design and application.*. Custom fan production.Ventilation and air conditioning engineering and application

ELECTRICAL SYSTEM ENGINEER / ELEKTRİK SİSTEM MÜHENDİSİ



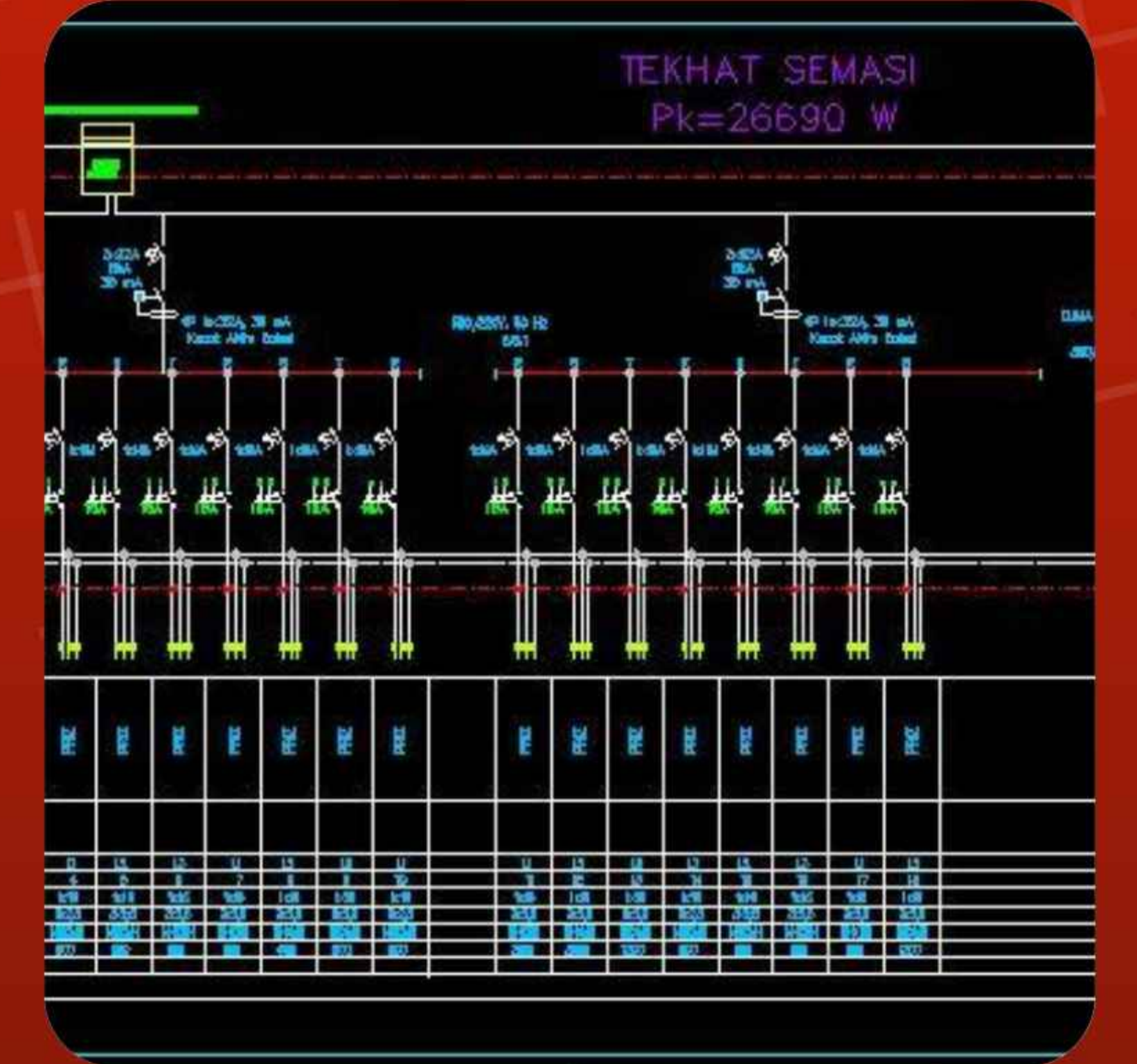
SIEMENS



Schneider
Electric



HES KABLO



EAE ELEKTRİK

. High-voltage power transmission lines.. Design and implementation of substations.*. Electrical panels design and manufacturing*. Generator systems design and application.*. Interior and exterior lighting systems design and application.*. Application of indoor and outdoor installations systems.*. Design and implementation of camera and security systems.*. Design and implementation of intelligent building autonomy systems

A large group of construction workers, mostly men, are sitting on the floor inside a large, arched industrial structure. They are wearing yellow safety vests and hard hats. Some are looking towards the camera, while others are looking away. The structure has a complex, grid-like metal framework. The overall scene is brightly lit, and the workers appear to be in a well-organized, professional setting.

Our priority is customer satisfaction. We design and implement living structures.